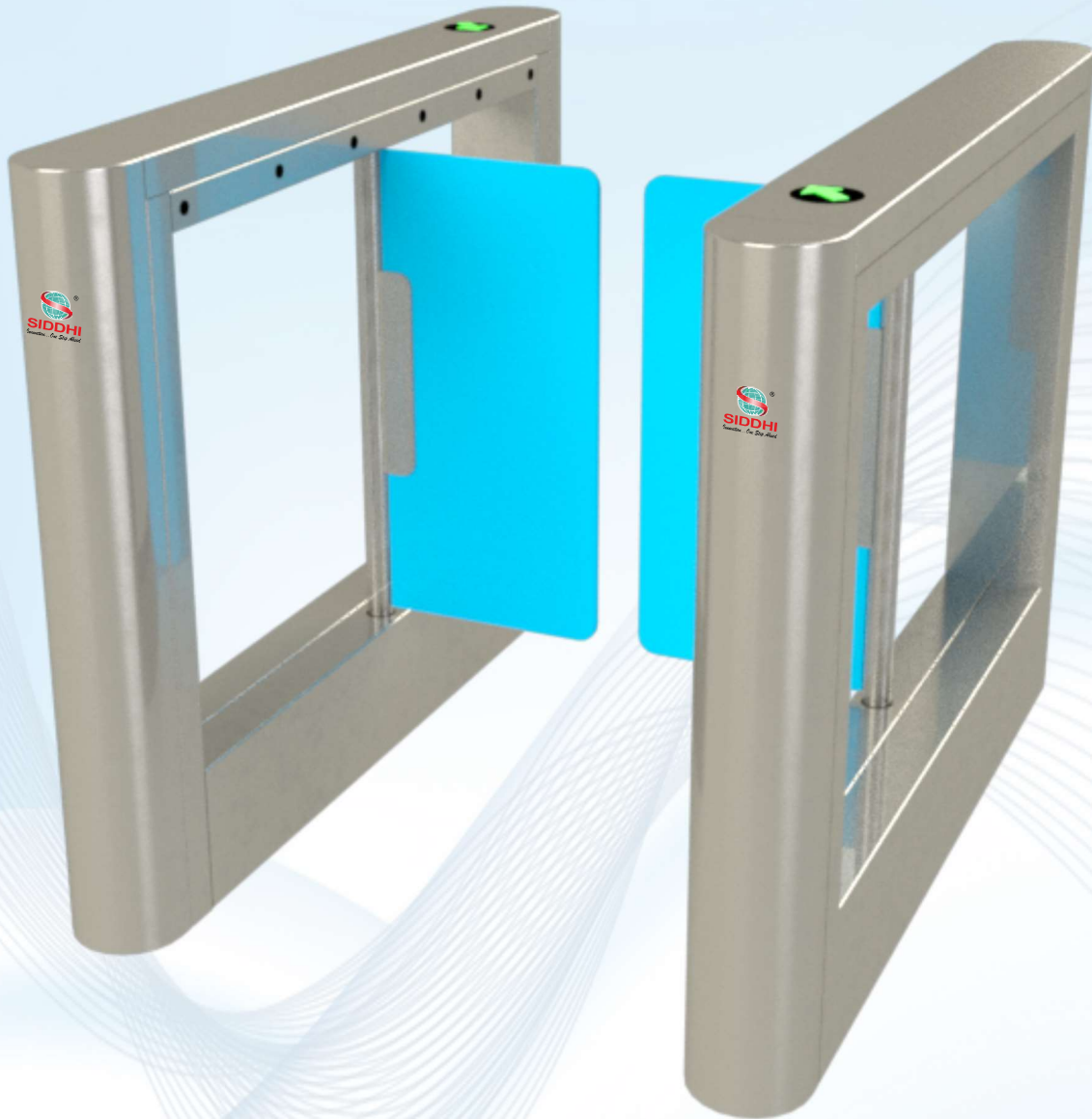


# Automatic Swing barrier



## **SWING BARRIER**

**Model No- SSB-100**

[www.siddhiepl.com](http://www.siddhiepl.com)



# Swing Barrier

Model No- SSB-100

SIDDHI automatic SWING barrier is a aesthetically elegant and attractive, heavy duty machine for entrance control. Easily configurable with any kind of access control device.

## Key Features

- ❖ Motorized operation with self locking gearbox.
- ❖ BLDC drive.
- ❖ Bi-directional operational Control
- ❖ tailgating and wrong entry Detection
- ❖ Led light for indication
- ❖ Casework available in Mild steel Powder coated OR Stainless Steel as per requirement.
- ❖ CE Certified - SMPS Power supply
- ❖ passage become free in case of power failure.
- ❖ throughput 25 to 30 person per min.

## Technical Specifications

<b>Power</b>	200-230V AC @ 50 TO 55Hz
<b>Power Consumption</b>	< 120 WATT
<b>Weight</b>	70 KG approx. (per box)
<b>Application</b>	Indoor (under shed/Canopy)
<b>No. of Lanes</b>	As per requirement.
<b>Throughput</b>	25 - 30 persons per minute without Reader
<b>Drive</b>	Motorized (automatic)
<b>Locking Mechanism</b>	Self locking gearbox
<b>Intelligence</b>	Built-in logic control
<b>Direction</b>	Bi-Directional
<b>Configuration</b>	Fail Safe in case of power failure
<b>Access Time Out</b>	Settable from 1-10 sec
<b>Movement Orientation</b>	Swinging flaps (self positioning)
<b>Trigger</b>	Dual side potential Free contact
<b>Reader mounting</b>	On Body
<b>Temperature</b>	5° C to 55° C
<b>Humidity</b>	95% Non-condensing
<b>Dimension(L X D X H) m</b>	1000 X 1400X 1030 mm ±5%
<b>Walk way</b>	600 mm /900mm
<b>Material of case work</b>	Mild steel Powder coated or stainless steel 304 ( Optional SS316)
<b>Standard color</b>	RAL7035-PC, Black- Structuer PP
<b>Flap wing</b>	Acrylic/glass
<b>Installation</b>	By anchor Bolt on plain surface
<b>Additional feature</b>	Tailgating & wrong entry detection
<b>IP Rating</b>	IP34

Siddhi Equipments always tries for innovation and hence specifications are subject to change without notice.



## SIDDHI EQUIPMENTS PVT. LTD.

10, Vidya Vinay, Vadner Road, Deolali, Nashik, Maharashtra, India - 422401

+91 88 88 249 123

sales@siddhiepl.com www.siddhiepl.com

**AN ISO 9001:2015 CERTIFIED COMPANY**